



Imprints  
cares

Nurturing Children. Supporting Parents.  
Changing Communities.

# EXPANDED LEARNING BEFORE & AFTER SCHOOL!

ON-SITE

HOURS	FULL TIME SERVICE	DROP IN
<p><b>MORNINGS</b> 6:30am – Start of the school day</p> <p><b>AFTERNOONS</b> End of the school day 6:00pm</p> <p><b>EARLY RELEASE DAYS</b> (On site at ABS) Immediately following school dismissal 6:00pm</p> <p><b>TEACHER WORK DAYS</b> (On site at ABS) 6:30am – 6:00pm</p> <p><b>CLOSED ON SCHOOL HOLIDAYS</b></p>	<p><b>REGISTRATION FEE</b> — \$40 Standard</p> <p><b>3 Days Weekly AFTERNOONS</b> \$165/month, per child</p> <p>MORNING/AFTERNOONS \$190/month, per child</p> <p><b>5 Days Weekly MORNINGS</b> \$90/month, per child</p> <p>AFTERNOONS \$240/month, per child</p> <p>MORNING/AFTERNOONS \$265/month, per child</p>	<p><b>REGISTRATION FEE</b> \$40 Standard</p> <p><b>DROP IN SERVICE</b> Available upon request Up to 10 days/month</p> <p><b>Questions?</b> <b>336.722.6296</b> JANELLE GIBBS • ext 223 Jgibbs@imprintscares.org LORI RICHARDS • ext 118 lrichards@imprintscares.org</p> <p><b>Tutoring Services Available Upon Request</b></p>



REGISTER ONLINE!

ImprintsCares.org/Expanded-Learning



**Imprints  
cares**

Nurturing Children. Supporting Parents.  
Changing Communities.

**ON-SITE**

# EXPANDED LEARNING

## OTHER LOCATIONS



## ELEMENTARY SCHOOLS

- Bolton
- Jefferson
- Meadowlark
- Old Richmond
- Piney Grove
- Rural Hall
- Sherwood Forest
- Smith Farm
- South Fork
- Speas
- Union Cross
- Vienna

## MIDDLE SCHOOL

- Meadowlark

## FEATURES

- Professional Staff including ABS Teachers
- Program is on site at ABS
- Full or Drop In Services

## ENRICHMENT ACTIVITIES

- Arts & Crafts
- Reading & Creative Writing
- Games
- Field Trips
- Special Guests & Activities
- And Much, Much More

**Questions?**  
336.722.6296

JANELLE GIBBS • ext 223  
Jgibbs@imprintscares.org

LORI RICHARDS • ext 118  
Lrichards@imprintscares.org

## SPRING CAMP

**April 3 – 6, 2018**

6:30am – 6:00pm  
Knollwood Baptist Church

**\$120/week or  
\$35per day**

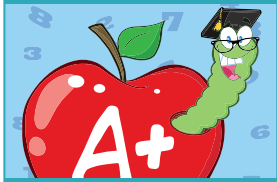
## 2018 SUMMER CAMPS

**June 11 – Aug 24**

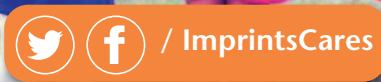
W-S & Kernersville

**Registration  
begins 2/15/18**

## Tutoring Services



**Upon Request**



[ImprintsCares.org/Expanded-Learning](http://ImprintsCares.org/Expanded-Learning)